



MATETSI
VICTORIA FALLS



MATETSI

The ultimate location from which to explore the magnificent UNESCO World Heritage site Victoria Falls. Matetsi offers a whole new way of experiencing the world's greatest waterfall in luxury.

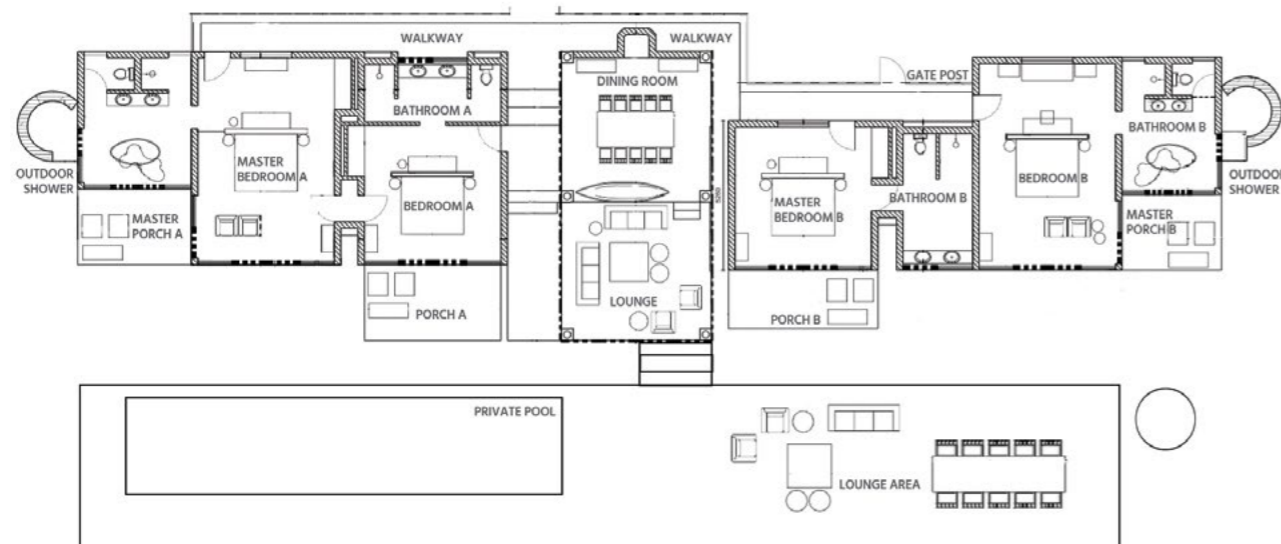
Set on a private 15 km stretch of the mighty Zambezi, just 40 km upriver from Victoria Falls, Matetsi is unique in its offer of both world-class safari experiences and an idyllic retreat from which to visit the Falls.

ACCOMMODATION

Matetsi River House |

Our spacious, exclusive-use villa offers four air-conditioned en-suite bedrooms and an array of facilities. Guests are looked after by a dedicated team, including a private chef, butler, guide and tracker.

- Indoor and outdoor lounges
- Covered and al fresco dining areas
- Fireplace
- Wide verandas
- Private swimming pool
- Private safari vehicle

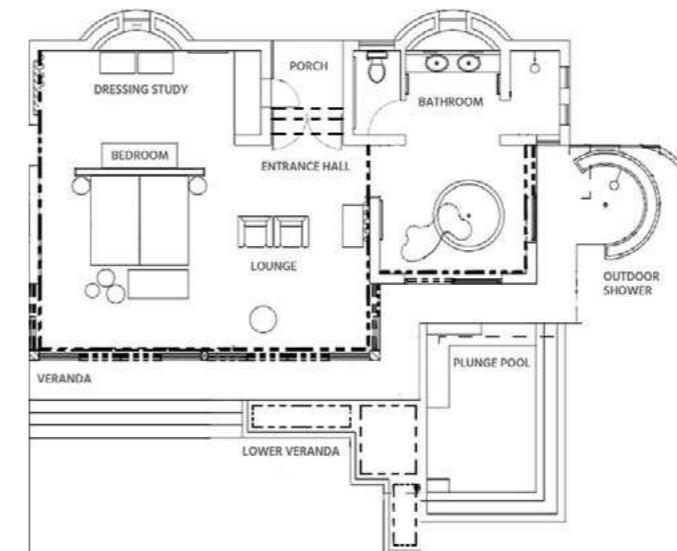


Matetsi River Lodge |

River Lodge comprises of two intimate river-facing camps. Each camp includes eight suites and one family suite.

- Spacious and air-conditioned
- Sumptuous king-size bed
- Large circular bathtub
- Indoor and outdoor rain showers
- Private plunge pool and deck
- Views of the Zambezi River

River Lodge guests are looked after by a personal butler, and have the option of booking a private safari vehicle.



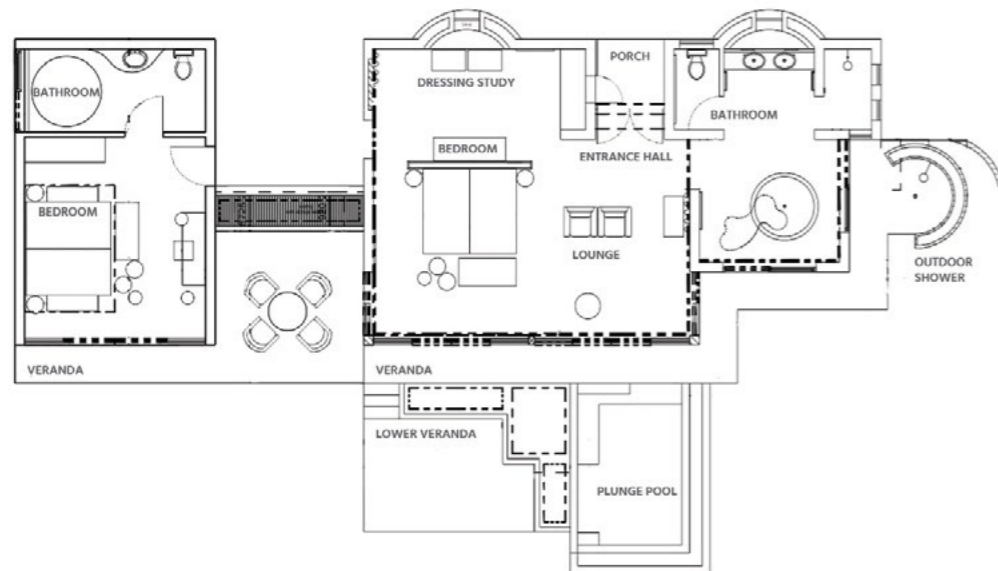
ACCOMMODATION

Matetsi River Lodge Family Suites |

River Lodge's two family suites offer the same facilities as the River Lodge suites. The master-suite is connected via an enclosed passage way to an additional en-suite bedroom.

- Spacious and air-conditioned
- King-size bed / twin beds
- Private plunge pool and deck
- Views of the Zambezi River

Ideal for family travel, River Lodge has a range of children's activities and the option of booking a childminder.



DINING, AMENITIES & ACTIVITIES

In addition to private dining with a private chef and butler provided, Matetsi River Lodge and River House guests enjoy open-space East and West camp bars, bomas and social dining facilities, as well as the intriguing cellar with an extensive wine list.

Zimbabwean Executive Chef, Shane Ellis, provides a fresh and evolving menu of international and local fine foods including Zambezi bream (fresh-water fish), vegetarian and vegan options and local highlights including venison, sadza (white cornmeal) and peanut butter rice which is much loved in the area.

Amenities |

- Indoor and outdoor dining spaces
- Boma dining area for traditional meals
- Al fresco lounge areas
- 20 m lap pool flanking the river
- Fitness studio
- Massage sala
- Library and boardroom
- Private wine cellar
- Shopping boutique
- Luxury safari vehicles
- iPads for guest use
- In-room Bluetooth speakers
- Complimentary laundry service
- Complimentary in-room and lodge wifi



Activities In-House |

Accompanied by knowledgeable, conservation-minded guides, guests can explore Matetsi Private Game Reserve's 55 000 hectares on foot, by vehicle and by boat while great herds of elephant, buffalo and plains game delight and amaze.

- Zambezi River boat cruises
- Zambezi canoeing
- Morning and evening game drives
- Night game drives
- Full day game drives
- Birdwatching
- Walking safaris
- Amateur fishing
- Professional fishing*
- Children's activities and childminders
- Massages*

*Activities at an additional cost.



Victoria Falls Area Excursions |

Bespoke excursions including helicopter flights, high teas and many more activities are available. All transport arrangements and services are managed and monitored by Matetsi to maintain premium standards.

- Tour of the Falls*
- High Tea overlooking the Falls*
- Helicopter flights over the Falls
- Whitewater rafting
- Bungee jumping
- Gorge Swing
- Zipline
- Canopy tour
- Microlight flight
- Horseback safaris
- Community excursions
- Curio shopping

*Complimentary scheduled Tour of the Falls and High Tea are offered to guests staying 2 nights or more at Matetsi Victoria Falls. External activities can be prebooked through our reservations office.

CONSERVATION & COMMUNITY

Matetsi Private Game Reserve lies in the North-West corner of Zimbabwe, a country globally renowned for being the first country in Africa with a visionary approach to managing natural resources from as early as 1975. The country has the second largest elephant population in the world and still holds significant tracts of African teak. Both of these are evident within the pristine 55,000-hectare wilderness that is Matetsi Private Game Reserve. The property holds a key position within the enormous Kavongo-Zambezi (KAZA) Trans-Frontier Conservation Area (TFCA), the largest TFCA in the world and incorporating five countries; Zimbabwe, Zambia, Namibia, Botswana, and Angola. (www.panda.org) At Matetsi we have taken deliberate steps to ensure minimum impact on our environment.

- Camps were set up within original campsite footprints and materials re-used and sourced locally, as far as possible.
- Local labour and talent ensured distinctly African, contemporary design and support for local artisans and talent.
- A vital, clear-roads network was installed throughout Matetsi Private Game Reserve – essential for anti-poaching and game viewing.
- Solar-powered boreholes and wide-reach radio networks have been installed to ensure vital care and protection of the wildlife and botanical treasures.

At Matetsi, we know that it is our responsibility to conserve our natural resources and to build environmental awareness.

- We have installed Natura water bottling plants at all camps and pure still and sparkling water is served in recycled glass bottles.
- Our knowledgeable safari guides are assisted by passionate trackers who have the opportunity to learn directly from the experienced guides. The pair engage with our guests to share knowledge and understanding of the flora and fauna in this beautiful part of Africa.



SEASONAL TIMINGS

Matetsi Victoria Falls is a wonderful all year-round destination, with offers and attractions for every season.

	JAN	FEB	MAR	APR	MAY	JUN	JUL	AUG	SEP	OCT	NOV	DEC
Average High Temperature (C°)	30°	29°	30°	29°	27°	25°	25°	28°	32°	33°	32°	30°
Average Low Temperature (C°)	18°	18°	17°	14°	10°	6°	6°	8°	13°	17°	18°	18°
Average Rain Fall (mm)	168	126	70	24	3	1	0	0	2	27	64	174
Average Sunrise Time	05:53	06:10	06:19	06:26	06:35	06:45	06:48	06:36	06:12	05:48	05:33	05:36
Average Sunset Time	18:58	18:51	18:31	18:07	17:51	17:49	17:57	18:06	18:12	18:17	18:30	18:48
Rate Season - Mid(\$) High(\$\$)	\$	\$	\$	\$\$	\$\$	\$\$	\$\$	\$\$	\$\$	\$	\$	\$
Best time for walking safaris												
Best time for game viewing												
Calving season												
Excellent birdwatching												
Dramatic electrical thunderstorms												
First migrant birds arrive												
The Falls at high water*												
The Falls at mid water*												
The Falls at low water*												
Spectacular aerial views of the Falls												
The best time to fish in the Zambezi												
Excellent white-water rafting												
Devil's Pool Experience**												

*Seasonal rainfall, therefore flow varies.

** Offered as part of the Livingstone Island Tour (Zambia)




RESERVATIONS

Contact us:

Matetsi Victoria Falls
 info@matetsivictoriafalls.com
 +263 8677 004 779
 +27 21 200 4220

Reservations
 reservations@matetsivictoriafalls.com
 +27 11 397 1142

For more information visit:
www.matetsivictoriafalls.com

 @matetsivictoriafalls

 @matetsivictoriafalls